

welcome to

Holmer House Farm

Holmer • Hereford



A modern development of
2 & 3 bedroom new homes
for shared ownership sale

welcome to your new home

Holmer House Farm, Holmer

Hereford, HR4 9FL

2 Bedroom Semi-Detached | **Plots 349 & 350**



Kitchen

Contemporary kitchen cupboards
Stainless Steel Oven,
Hob and Extractor
Vinyl flooring
Space for Washing Machine
and Fridge/Freezer

Bathroom

Three piece white suite
Family Bathroom
Complimentary wall tiling
Downstairs WC
Vinyl flooring

General

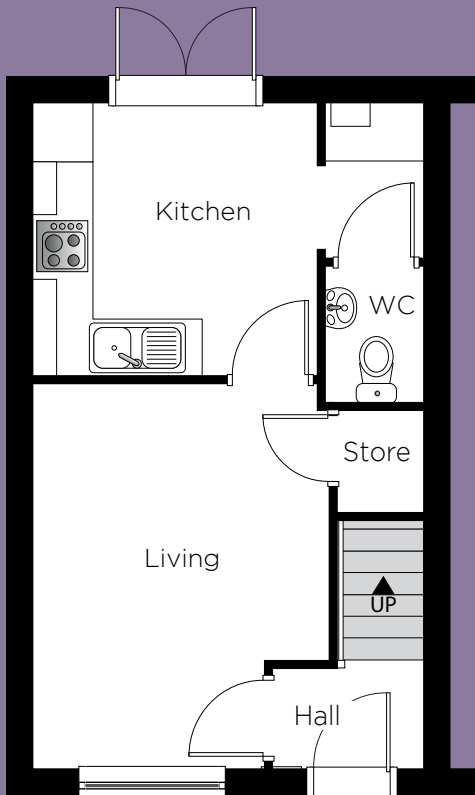
Located in a popular town of Holmer
Range of Local Amenities
Excellent Transport Links
Allocated Parking Space
10 Year Build Warranty
Turfed Rear Garden

CGI shown is for Illustrations purposes only.

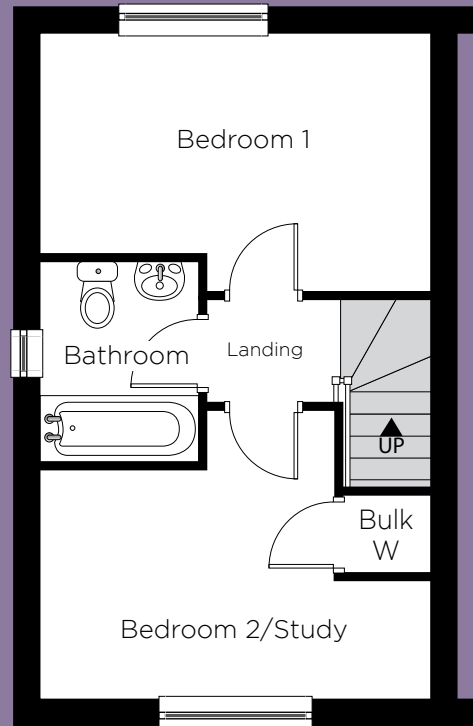
Holmer House Farm, Holmer

Hereford, HR4 9FL

2 Bedroom Semi-Detached | 349 & 350



Ground Floor



First Floor

Please note:
Some plots will be the opposite floor layout to shown.

Ground Floor

Kitchen	3.12m 10' 3"	x	3.32m (max) 10' 11" (max)
Living	4.19m 13' 9"	x	3.24m (max) 10' 7" (max)

First Floor

Bed 1	4.27m 14' 0"	x	2.43m (max) 7' 11" (max)
Bed 2/ Study	4.27m 14' 0"	x	2.53m (max) 8' 3" (max)
Bathroom	2.20m 7' 3"	x	1.73m (max) 5' 8" (max)

Total Floor Area:

62.33m²/670.89 sq.ft

Kitchen layouts are indicative only. Please consult with Platform staff for specific plans, room dimensions and kitchen layouts. The information is for guidance only and is not to be relied on as statements or representations of fact and they do not make or give representation or warrant whatsoever and do not form part of any contract. All room measurements shown in metric first followed by imperial underneath.

welcome to your new home

Holmer House Farm, Holmer

Hereford, HR4 9FL

3 Bedroom Semi-Detached | **Plots 357, 358, 359 & 360**



Kitchen

Contemporary kitchen cupboards
Stainless Steel Oven,
Hob and Extractor
Vinyl flooring
Space for Washing Machine
and Fridge/Freezer

Bathroom

Three piece white suite
Family Bathroom
Complimentary wall tiling
Downstairs WC
Vinyl flooring

General

Located in a popular town of Holmer
Range of Local Amenities
Excellent Transport Links
Allocated Parking Space
10 Year Build Warranty
Turfed Rear Garden

CGI shown is for Illustrations purposes only.

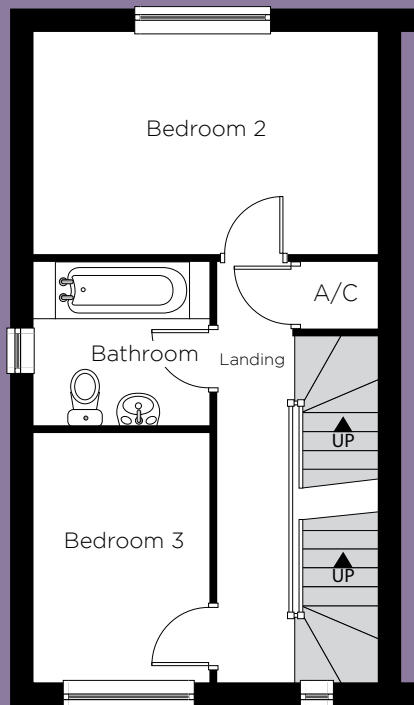
Holmer House Farm, Holmer

Hereford, HR4 9FL

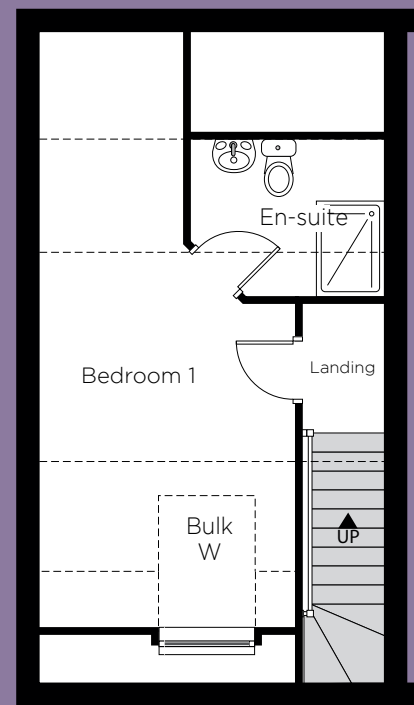
3 Bedroom Semi-Detached | **Plots 357, 358, 359 & 360**



Ground Floor



First Floor



Second Floor

Please note: Some plots will be the opposite floor layout to shown.

Ground Floor

Kitchen	3.76m	x	3.22m	(max)
	12' 4"	x	10' 7"	(max)
Living	4.49m	x	3.34m	(max)
	14' 9"	x	10' 11"	(max)

First Floor

Bed 1	7.64m	x	3.27m	(max)
	25' 1"	x	10' 9"	(max)
En-Suite	2.44m	x	2.02m	(max)
	8' 0"	x	6' 8"	(max)
Bed 2	4.37m	x	2.86m	(max)
	14' 4"	x	9' 5"	(max)
Bed 3	3.18m	x	2.27m	(max)
	10' 5"	x	7' 5"	(max)
Bathroom	2.27m	x	2.13m	(max)
	7' 5"	x	6' 12"	(max)

Total Floor Area:

109.14m²/1174.78 sq.ft

Kitchen layouts are indicative only. Please consult with Platform staff for specific plans, room dimensions and kitchen layouts. The information is for guidance only and is not to be relied on as statements or representations of fact and they do not make or give representation or warrant whatsoever and do not form part of any contract. All room measurements shown in metric first followed by imperial underneath.

welcome to your new home

Holmer House Farm, Holmer

Hereford, HR4 9FL

3 Bedroom Semi-Detached | **Plots 405 & 406**



Kitchen

Contemporary kitchen cupboards
Stainless Steel Oven,
Hob and Extractor
Vinyl flooring
Space for Washing Machine
and Fridge/Freezer

Bathroom

Three piece white suite
Family Bathroom
Complimentary wall tiling
Downstairs WC
Vinyl flooring

General

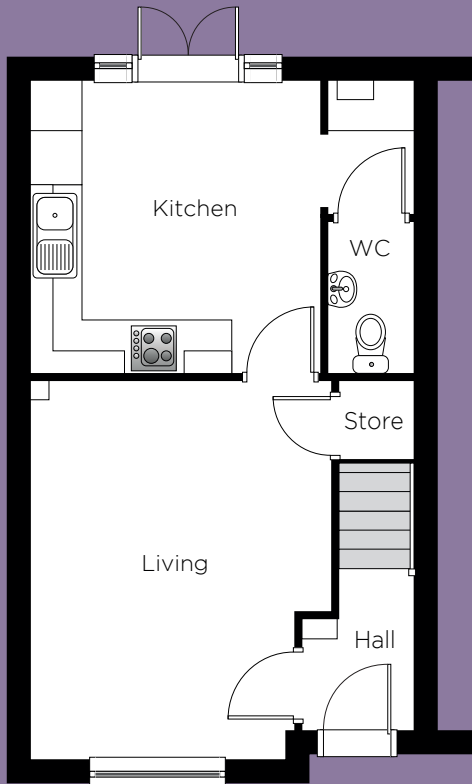
Located in a popular town of Holmer
Range of Local Amenities
Excellent Transport Links
Allocated Parking Space
10 Year Build Warranty
Turfed Rear Garden

CGI shown is for Illustrations purposes only.

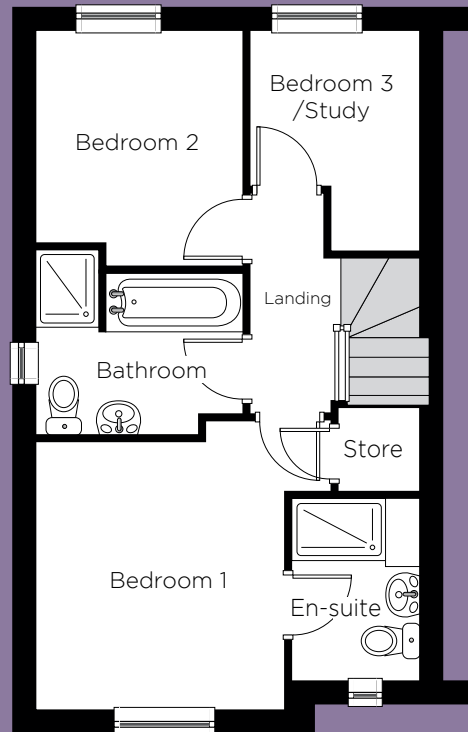
Holmer House Farm, Holmer

Hereford, HR4 9FL

3 Bedroom Semi-Detached | **Plots 405 & 406**



Ground Floor



First Floor

Please note:
Some plots will be the opposite floor layout to shown.

Ground Floor

Kitchen	3.72m 12' 2"	x	3.66m 12' 0"	(max)
Living	4.75m 15' 7"	x	3.63m 11' 11"	(max)

First Floor

Bed 1	3.64m 11' 11"	x	3.10m 10' 2"	(max)
En-Suite	2.24m 7' 4"	x	1.60m 5' 3"	(max)
Bed 2	2.94m 9' 8"	x	2.57m 8' 5"	(max)
Bed 3	2.76m 9' 1"	x	2.10m 6' 11"	(max)
Bathroom	2.60m 8' 6"	x	2.31m 7' 7"	(max)

Total Floor Area:

81.98m²/882.47 sq.ft

Kitchen layouts are indicative only. Please consult with Platform staff for specific plans, room dimensions and kitchen layouts. The information is for guidance only and is not to be relied on as statements or representations of fact and they do not make or give representation or warrant whatsoever and do not form part of any contract. All room measurements shown in metric first followed by imperial underneath.




Holmer House Farm, Holmer

Hereford, HR4 9FL

Site plan



Development

-  2 Bedroom Semi-Detached houses Plots 349 & 350
-  3 Bedroom Semi-detached houses Plots 357, 358, 359 & 360
-  3 Bedroom Semi-detached houses Plots 405 & 406

Part of the **platform** housing group

For further details please contact our sales team on: **0333 200 7304** or email: sales@platformhg.com

Contact Us:  www.platformhomeownership.com |  facebook.com/PlatformHomeOwnership
 twitter.com/PlatformNewHome |  instagram.com/platformhomeownership

Holmer House Farm, Holmer

Hereford, HR4 9FL

House prices for all plots available



Houses available

Plot	House Type	Postal Address	Handover	100% Price	40% Share Value	Monthly Rent	Service Charge
349	2 Bedroom Semi-Detached House	9 Azure Place, Holmer, Hereford HR4 9FH.	Jan 2024	£268,000	£107,200	£368.50	TBC
350	2 Bedroom Semi-Detached House	7 Azure Place, Holmer, Hereford HR4 9FH.	Jan 2024	£268,000	£107,200	£368.50	TBC
357	3 Bedroom Semi-Detached House	41 Hedgerow Way, Holmer, Hereford HR4 9FF	Nov 2023	£312,000	£124,800	£429.00	TBC
358	3 Bedroom Semi-Detached House	40 Hedgerow Way, Holmer, Hereford HR4 9FF	Nov 2023	£312,000	£124,800	£429.00	TBC
359	3 Bedroom Semi-Detached House	39 Hedgerow Way, Holmer, Hereford HR4 9FF	Nov 2023	£312,000	£124,800	£429.00	TBC
360	3 Bedroom Semi-Detached House	38 Hedgerow Way, Holmer, Hereford HR4 9FF	Nov 2023	£312,000	£124,800	£429.00	TBC
405	3 Bedroom Semi-Detached House	16 Darters Lane, Holmer, Hereford HR4 9FI	Available	£278,000	£111,200	£382.25	£26.03
406	3 Bedroom Semi-Detached House	17 Darters Lane, Holmer, Hereford HR4 9FI	Available	£278,000	£111,200	£382.25	£26.03

For further details please contact our sales team on: **0333 200 7304** or email: sales@platformhg.com

Contact Us:  www.platformhomeownership.com |  facebook.com/PlatformHomeOwnership

 twitter.com/PlatformNewHome |  instagram.com/platformhomeownership

For details contact our sales team
on **0333 200 7304**
or email: **sales@platformhg.com**

Contact Us:



www.platformhomeownership.com



facebook.com/PlatformHomeOwnership



twitter.com/PlatformNewHome



instagram.com/platformhomeownership

Scheme administered by Platform Housing Group
1700 Solihull Parkway, Birmingham Business Park, Solihull, B37 7YD.

Part of the **platform**
housing group