

# HANDLEY CHASE

SLEAFORD

platform   
**home**  
OWNERSHIP

# PLATFORM HOME OWNERSHIP

At Platform Home Ownership, we're passionate about building quality homes for our customers and creating communities that homeowners can be proud of. It's our mission to build a better future for the UK - investing in affordable homes to ensure accessible routes to homeownership for everyone.

*Building A Better Future Through New Homes*

**INTRODUCTION**  
P. 04

**LOCAL AREA**  
P. 06

**CONNECTIVITY**  
P. 07

**SHARED OWNERSHIP**  
P. 08

**THE DEVELOPMENT**  
P. 09

**AVAILABLE HOMES**  
P. 10

**GET IN TOUCH**





# **WELCOME TO HANDLEY CHASE, SITUATED IN THE BUSTLING TOWN OF SLEAFORD**



# THE WORLD AROUND YOU

The Handley Chase development is located in the market town of Sleaford, a friendly market town situated on the edge of the Fenlands. Boasting stunning views of the Fenland countryside, Handley Chase will be a popular location to live with its close links into the town centre, as well as being well-connected to handy transport links making transport in and around Lincolnshire easy.



HANDLEY CHASE  
IS PERFECTLY  
CONNECTED IN  
EVERY DIRECTION  
MAKING IT A HOME  
BUYERS DREAM

13 MILES  
GRANTHAM

17 MILES  
BOSTON

20 MILES  
NEWARK

20 MILES  
LINCOLN

## LOCAL AMENITIES

ALDI	3 MIN (CAR)	0.8 MILES
MILLVIEW MEDICAL CENTRE	4 MIN (CAR)	0.9 MILES
BETTER GYM SLEAFORD	7 MIN (CAR)	1.9 MILES
SLEAFORD LEISURE CENTRE	7 MIN (CAR)	1.5 MILES

## PLACES OF INTEREST

THE IVY	4 MIN (CAR)	0.8 MILES
MAREHAM PASTURES LOCAL NATURE RESERVE	5 MIN (CAR)	1.4 MILES
SLEAFORD CASTLE	3 MIN (CAR)	0.7 MILES
THE HUB	5 MIN (CAR)	1.2 MILES

## CONNECTIVITY

SLEAFORD TRAIN STATION	4 MIN (CAR)	0.8 MILES
A17	10 MIN (CAR)	6 MILES
A15	4 MIN (CAR)	1.3 MILES
BUS STOP	12 MIN (WALK)	0.6 MILES

## EDUCATION

ST BOLDOLPH'S C OF E PRIMARY SCHOOL	4 MIN (CAR)	1.1 MILES
COUNTRY KIDS DAY NURSERY	3 MIN (CAR)	0.8 MILES
KESTEVEN & SLEAFORD HIGH SCHOOL SELECTIVE ACADEMY	6 MIN (CAR)	1 MILE
SLEAFORD CHURCH LANE PRIMARY SCHOOL & NURSERY	6 MIN (CAR)	1.3 MILES

Travel times are all shown in minutes and are representative of driving time. All times and distances are taken from [google.com/maps](https://www.google.com/maps)



# ABOUT SHARED OWNERSHIP

## BUY YOUR HANDLEY CHASE HOME THROUGH SHARED OWNERSHIP

Your dream home is more affordable than you may think with Shared Ownership. Shared Ownership means you can purchase part of your home and then pay rent on the remaining share. Typically, you can purchase 40-75% of your home, but lower shares are available. What's more, Shared Ownership is flexible, and allows you to increase your level of ownership over time if you choose to.

Whatever your looking for, we have a wide selection of homes perfect for whatever your needs.

Buying through Shared Ownership at this development means you can purchase between 10-75% of your property and pay a subsidised rent on the remaining share you don't own.

### HOW IT WORKS

- 1 BUY THE FIRST SHARE IN YOUR NEW HOME.
- 2 PAY RENT ON THE REMAINING SHARE
- 3 BUY MORE SHARES IN YOUR HOME LATER

### DID YOU KNOW?

Shared Ownership offers great flexibility, and you can purchase more of your home through staircasing whenever you are ready too.

[CLICK HERE TO LEARN MORE BY READING OUR SHARED OWNERSHIP GUIDE](#)

## HANDLEY CHASE

SLEAFORD

### A STUNNING COLLECTION OF TWO, THREE AND FOUR-BEDROOM HOMES AVAILABLE THROUGH SHARED OWNERSHIP.

Handley Chase is a major development underway to bring much-needed new build homes and affordable housing to the local area. With a Co-Op close by for resident's convenience, a new school and retirement home, Handley Chase will form a new community within Sleaford.



GET TO KNOW

# HANDLEY CHASE

SLEAFORD

Handley Chase is an exclusive collection of two and three and four-bedroom homes offering new opportunities for first time buyers, downsizers and growing families.

## RENT TO BUY



**THE SHERMONT**  
2 Bedroom Home



**THE HAYTON**  
3 Bedroom Home



**THE TAYWOOD**  
4 Bedroom Home

## SHARED OWNERSHIP



**THE SHERMONT**  
2 Bedroom Home



**THE HAYTON**  
3 Bedroom Home





This image is from an imaginary viewpoint within an open space area. Its purpose is to give a feel for the development, not an accurate description of each property. The illustration shows a typical Platform Home Ownership home of this type, but there are, however, variances from site to site. External materials, finishes, landscaping, windows and the position of garages, (where provided) may vary throughout the development. Properties may also be built handed (mirror image). Please ask for further details.

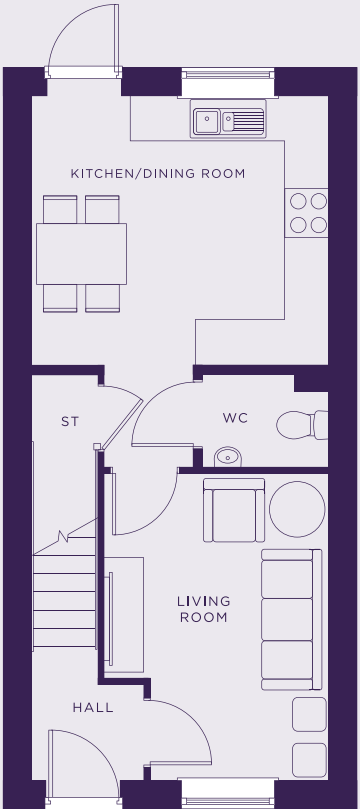
# THE SHERMONT

## RENT TO BUY PLOTS

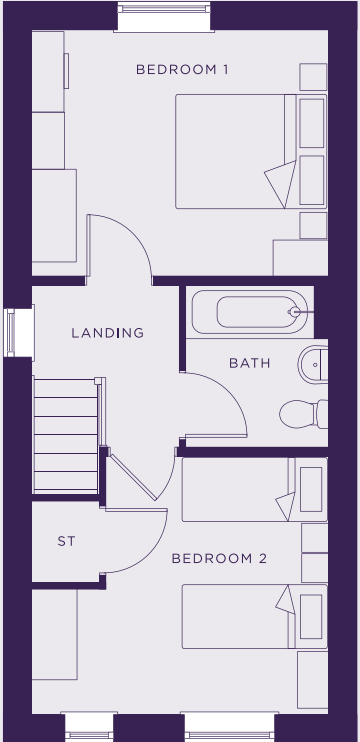
13, 14, 15, 17, 44, 45, 46, 48, 49, 119, 120, 122, 123, 134, 135 & 136

MID-TERRACE / END OF TERRACE

TOTAL 774 SQ FT



GROUND



FIRST

## SPECIFICATION

### Kitchen

- Modern fitted kitchen
- Stainless steel integral oven, hob & extract hood
- Space for washing machine & fridge/freezer
- Vinyl flooring to kitchen and WC
- Open plan kitchen/dining

### Bathroom

- Family bathroom
- Shower over bath
- Three piece white suite
- Complimentary wall tiling
- Vinyl flooring to bathroom

### General

- Nearby schools and local amenities
- Countryside location
- Excellent transport links
- 2 parking spaces per property
- 10 Year build warranty





This image is from an imaginary viewpoint within an open space area. Its purpose is to give a feel for the development, not an accurate description of each property. The illustration shows a typical Platform Home Ownership home of this type, but there are, however, variances from site to site. External materials, finishes, landscaping, windows and the position of garages, (where provided) may vary throughout the development. Properties may also be built handed (mirror image). Please ask for further details.

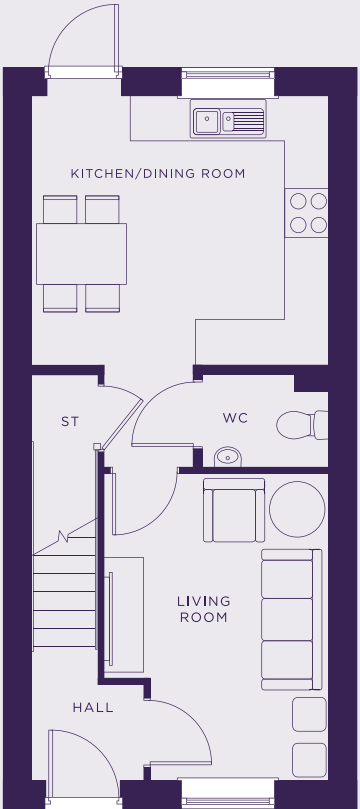
# THE SHERMONT

## RENT TO BUY PLOTS

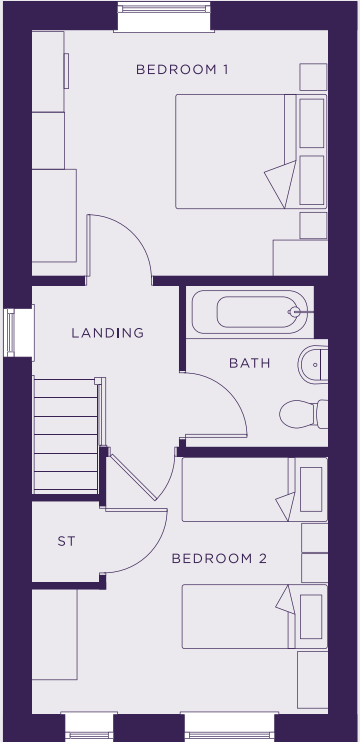
12, 55, 56, 67, 68, 69, 70, 71, 111, 112, 150 & 151

SEMI-DETACHED HOMES

TOTAL 774 SQ FT



GROUND



FIRST

### SPECIFICATION

#### Kitchen

- Modern fitted kitchen
- Stainless steel integral oven, hob & extract hood
- Space for washing machine & fridge/freezer
- Vinyl flooring to kitchen and WC
- Open plan kitchen/dining

#### Bathroom

- Family bathroom
- Shower over bath
- Three piece white suite
- Complimentary wall tiling
- Vinyl flooring to bathroom

#### General

- Nearby schools and local amenities
- Countryside location
- Excellent transport links
- 2 parking spaces per property
- 10 Year build warranty





THE HAYTON

This image is from an imaginary viewpoint within an open space area. Its purpose is to give a feel for the development, not an accurate description of each property. The illustration shows a typical Platform Home Ownership home of this type, but there are, however, variances from site to site. External materials, finishes, landscaping, windows and the position of garages, (where provided) may vary throughout the development. Properties may also be built handed (mirror image). Please ask for further details.

# THE HAYTON

## RENT TO BUY PLOTS

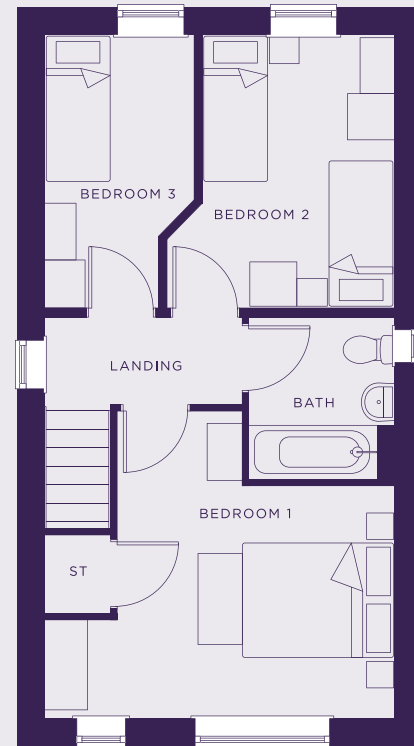
3, 4, 5, 16, 18, 47, 118, 121, 124, 152, 153, 154, 155, 156 & 157

MID-TERRACE / END OF TERRACE

TOTAL 911 SQ FT



GROUND



FIRST

## SPECIFICATION

### Kitchen

- Modern fitted kitchen
- Stainless steel integral oven, hob & extract hood
- Space for washing machine & fridge/freezer
- Vinyl flooring to kitchen and WC
- Open plan kitchen/dining

### Bathroom

- Family bathroom
- Shower over bath
- Three piece white suite
- Complimentary wall tiling
- Vinyl flooring to bathroom

### General

- Nearby schools and local amenities
- Countryside location
- Excellent transport links
- 2 parking spaces per property
- 10 Year build warranty





This image is from an imaginary viewpoint within an open space area. Its purpose is to give a feel for the development, not an accurate description of each property. The illustration shows a typical Platform Home Ownership home of this type, but there are, however, variances from site to site. External materials, finishes, landscaping, windows and the position of garages, (where provided) may vary throughout the development. Properties may also be built handed (mirror image). Please ask for further details.

# THE HAYTON

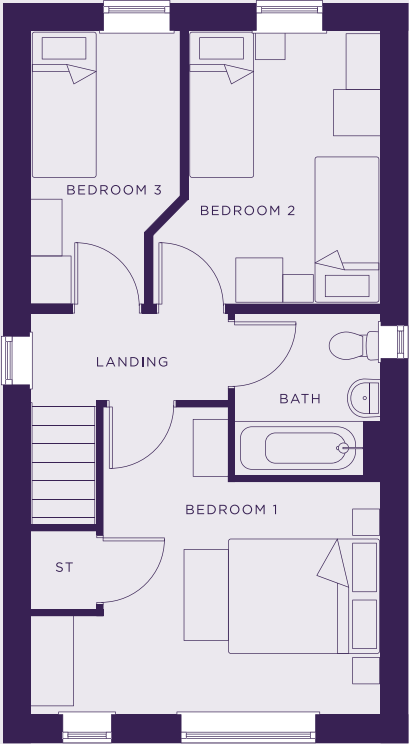
RENT TO BUY PLOTS  
11, 39, 40, 72, 127 & 128

SEMI-DETACHED HOMES

TOTAL 911 SQ FT



GROUND



FIRST

## SPECIFICATION

### Kitchen

- Modern fitted kitchen
- Stainless steel integral oven, hob & extract hood
- Space for washing machine & fridge/freezer
- Vinyl flooring to kitchen and WC
- Open plan kitchen/dining

### Bathroom

- Family bathroom
- Shower over bath
- Three piece white suite
- Complimentary wall tiling
- Vinyl flooring to bathroom

### General

- Nearby schools and local amenities
- Countryside location
- Excellent transport links
- 2 parking spaces per property
- 10 Year build warranty





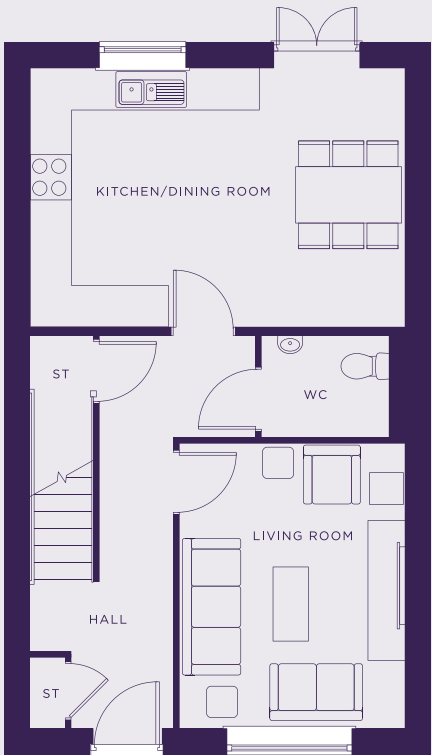
This image is from an imaginary viewpoint within an open space area. Its purpose is to give a feel for the development, not an accurate description of each property. The illustration shows a typical Platform Home Ownership home of this type, but there are, however, variances from site to site. External materials, finishes, landscaping, windows and the position of garages, (where provided) may vary throughout the development. Properties may also be built handed (mirror image). Please ask for further details.

# THE TAYWOOD

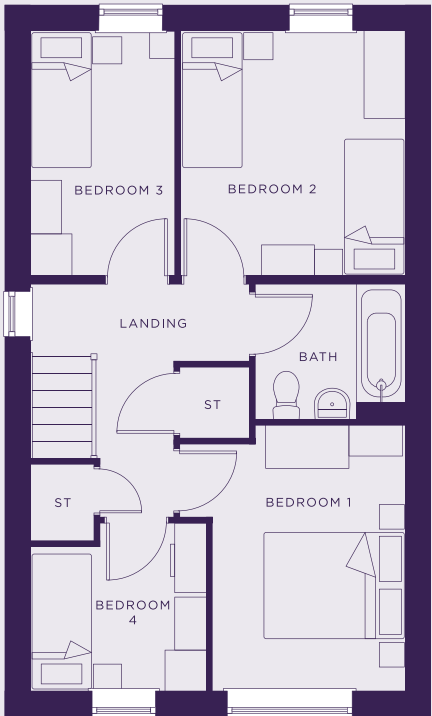
RENT TO BUY PLOTS  
107 & 108

SEMI-DETACHED HOMES

TOTAL 1,083 SQ FT



GROUND



FIRST

## SPECIFICATION

### Kitchen

- Modern fitted kitchen
- Stainless steel integral oven, hob & extract hood
- Space for washing machine & fridge/freezer
- Vinyl flooring to kitchen and WC
- Open plan kitchen/dining

### Bathroom

- Family bathroom
- Shower over bath
- Three piece white suite
- Complimentary wall tiling
- Vinyl flooring to bathroom

### General

- Nearby schools and local amenities
- Countryside location
- Excellent transport links
- 2 parking spaces per property
- 10 Year build warranty





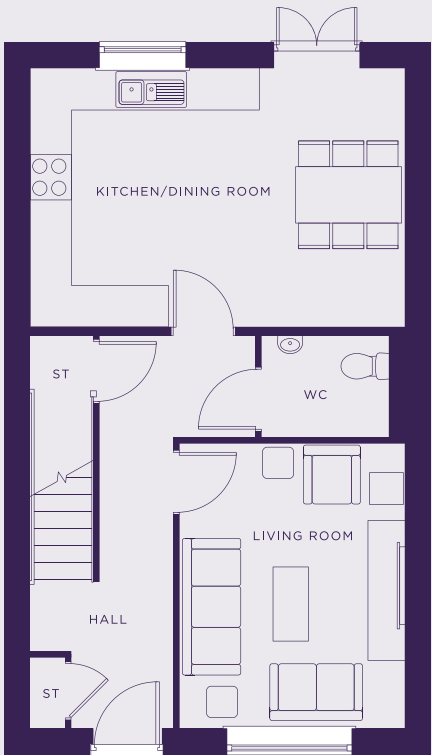
This image is from an imaginary viewpoint within an open space area. Its purpose is to give a feel for the development, not an accurate description of each property. The illustration shows a typical Platform Home Ownership home of this type, but there are, however, variances from site to site. External materials, finishes, landscaping, windows and the position of garages, (where provided) may vary throughout the development. Properties may also be built handed (mirror image). Please ask for further details.

# THE TAYWOOD

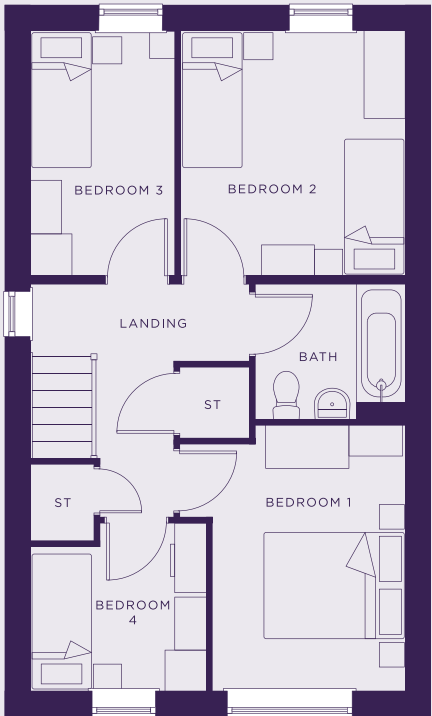
RENT TO BUY PLOTS  
38, 41, 133, 137 & 158

DETACHED HOMES

TOTAL 774 SQ FT



GROUND



FIRST

## SPECIFICATION

### Kitchen

- Modern fitted kitchen
- Stainless steel integral oven, hob & extract hood
- Space for washing machine & fridge/freezer
- Vinyl flooring to kitchen and WC
- Open plan kitchen/dining

### Bathroom

- Family bathroom
- Shower over bath
- Three piece white suite
- Complimentary wall tiling
- Vinyl flooring to bathroom

### General

- Nearby schools and local amenities
- Countryside location
- Excellent transport links
- 2 parking spaces per property
- 10 Year build warranty



## RENT TO BUY PRICES FOR AVAILABLE PLOTS

[illegible]





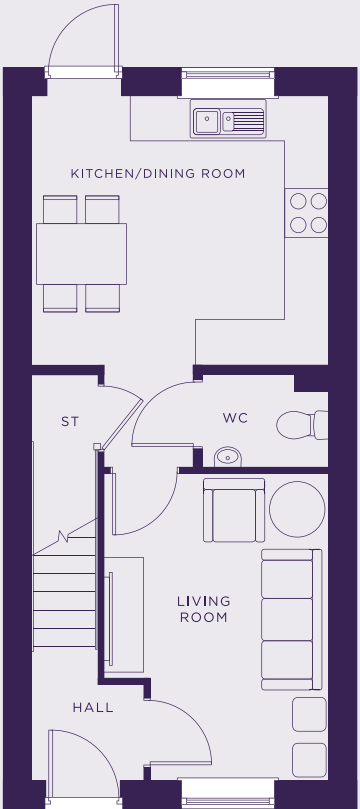
This image is from an imaginary viewpoint within an open space area. Its purpose is to give a feel for the development, not an accurate description of each property. The illustration shows a typical Platform Home Ownership home of this type, but there are, however, variances from site to site. External materials, finishes, landscaping, windows and the position of garages, (where provided) may vary throughout the development. Properties may also be built handed (mirror image). Please ask for further details.

# THE SHERMONT

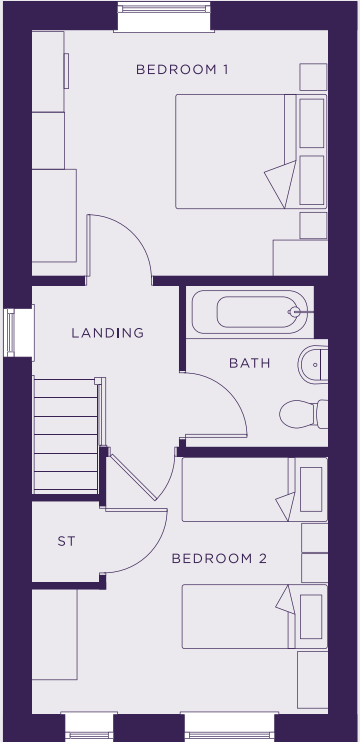
SHARED OWNERSHIP PLOTS  
37, 42, 129, 130, 131 & 132

SEMI-DETACHED HOMES

TOTAL 774 SQ FT



GROUND



FIRST

## SPECIFICATION

### Kitchen

- Modern fitted kitchen
- Stainless steel integral oven, hob & extract hood
- Space for washing machine & fridge/freezer
- Vinyl flooring to kitchen and WC
- Open plan kitchen/dining

### Bathroom

- Family bathroom
- Shower over bath
- Three piece white suite
- Complimentary wall tiling
- Vinyl flooring to bathroom

### General

- Nearby schools and local amenities
- Countryside location
- Excellent transport links
- 2 parking spaces per property
- 10 Year build warranty





This image is from an imaginary viewpoint within an open space area. Its purpose is to give a feel for the development, not an accurate description of each property. The illustration shows a typical Platform Home Ownership home of this type, but there are, however, variances from site to site. External materials, finishes, landscaping, windows and the position of garages, (where provided) may vary throughout the development. Properties may also be built handed (mirror image). Please ask for further details.

# THE HAYTON

SHARED OWNERSHIP PLOTS  
36 & 43

SEMI-DETACHED HOMES  
TOTAL 911 SQ FT

GROUND

FIRST

SPECIFICATION

- Kitchen**
- Modern fitted kitchen
  - Stainless steel integral oven, hob & extract hood
  - Space for washing machine & fridge/freezer
  - Vinyl flooring to kitchen and WC
  - Open plan kitchen/dining

- Bathroom**
- Family bathroom
  - Shower over bath
  - Three piece white suite
  - Complimentary wall tiling
  - Vinyl flooring to bathroom

- General**
- Nearby schools and local amenities
  - Countryside location
  - Excellent transport links
  - 2 parking spaces per property
  - 10 Year build warranty



# Handley Chase

Sleaford

## SHARED OWNERSHIP PRICES FOR AVAILABLE PLOTS

[illegible]





SLEAFORD,  
LINCOLNSHIRE,  
NG34 6AF



PLATFORMHOMEOWNERSHIP



@PLATFORMHOMEOWNERSHIP



@PLATFORMNEWHOME

GET IN TOUCH

0333 200 7304

[sales@platformhg.com](mailto:sales@platformhg.com)

SATNAV

NG34 6AF

Platform Home Ownership have taken every effort to ensure that these documents are accurate and represent the properties available. Platform Home Ownership and the developer may in their efforts to improve design reserve the right to alter site plans, floorplans, elevations and specifications without prior notice. Maps shown are not to scaled and for illustrative purposes only. Distances are taken from [google.co.uk/maps](https://www.google.co.uk/maps). Information is correct at the time it was published - **November 2025**. For more information please visit us website at [www.platformhomeownership.com](http://www.platformhomeownership.com)