

HAWTON GROVE

platform 
home
OWNERSHIP

PLATFORM HOME OWNERSHIP

At Platform Home Ownership, we're passionate about building quality homes for our customers and creating communities that homeowners can be proud of. It's our mission to build a better future for the UK - investing in affordable homes to ensure accessible routes to homeownership for everyone.

[Building A Better Future Through New Homes](#)

INTRODUCTION
P.04

LOCAL AREA
P.06

CONNECTIVITY
P.07

SHARED OWNERSHIP
P.08

THE DEVELOPMENT
P.09

AVAILABLE HOMES
P. 10

GET IN TOUCH



**WELCOME TO HAWTON
GROVE, A VIBRANT NEW
DEVELOPMENT AT THE
HEART OF BALDERTON,
NOTTINGHAMSHIRE.**

THE WORLD AROUND YOU

Hawton Grove represents a brand new addition to Balderton, one of the largest and most historic villages in Nottinghamshire. With a heritage stretching back over a thousand years, Balderton is an idyllic, peaceful village that adjoins Newark-on-Trent, providing residents with convenient transport links, a strong sense of community, safety and everyday amenities amongst stunning scenery.



HAWTON GROVE IS PERFECTLY CONNECTED IN EVERY DIRECTION MAKING IT A HOME BUYERS DREAM

2 MILES

NEWARK-ON-TRENT

23 MILES

LINCOLN

37 MILES

LEICESTER

40 MILES

DERBY

LOCAL AMENITIES

PREMIER (CONVENIENCE STORE)	1 Min	0.3 MILEs
SAINSBURY'S (SUPERMARKET)	2 MinS	0.7 MILEs
LIDL (SUPERMARKET)	2 MinS	0.8 MILEs
TESCO EXPRESS (CONVENIENCE STORE)	3 MinS	0.7 MILEs

PLACES OF INTEREST

ALDERTON LAKE	3 MinS	0.7 MILEs
SCONCE AND DEVON PARK	5 MinS	1.8 MILEs
THE OSSINGTON	7 MinS	2.0 MILEs
NATIONAL CIVIL WAR CENTRE - NEWARK MUSEUM	8 MinS	2.3 MILEs

CONNECTIVITY

NEWARK-ON-TRENT	6 MinS	2.0 MILEs
LINCOLN	48 MinS	23 MILEs
LEICESTER	59 MinS	37 MILEs
DERBY	81 MinS	40 MILEs

EDUCATION

CHUTER EDE PRIMARY SCHOOL	3 MinS	1.0 MILEs
THE NEWARK ACADEMY	4 MinS	1.1 MILEs
BARNBY ROAD ACADEMY PRIMARY	6 MinS	1.9 MILEs
THE SUTHERS SCHOOL	6 MinS	2.0 MILEs

Figures are estimates and can change due to factors such as traffic, roadworks, and the exact location. All times and distances are taken from google.com/maps.

ABOUT SHARED OWNERSHIP

BUY YOUR HOME AT HAWTON GROVE THROUGH SHARED OWNERSHIP

Your dream home is more affordable than you may think with Shared Ownership. Shared Ownership means you can purchase part of your home and then pay rent on the remaining share. typically, you can purchase 40-75% of your home, but lower shares are available. what's more, Shared Ownership is flexible, and allows you to increase your level of ownership over time if you choose to.

whatever your looking for, we have a wide selection of homes perfect for whatever your needs.

Buying through Shared Ownership at this development means you can purchase between 10-75% of your property and pay a subsidised rent on the remaining share you don't own.

HOW IT WORKS

- 1** BUY THE FIRST SHARE IN YOUR NEW HOME.
- 2** PAY RENT ON THE REMAINING SHARE
- 3** BUY MORE SHARES IN YOUR HOME LATER

DID YOU KNOW?

Shared Ownership offers great flexibility, and you can purchase more of your home through staircasing whenever you are ready too.

[CLICK HERE TO LEARN MORE BY READING OUR SHARED OWNERSHIP GUIDE](#)

HAWTON GROVE

**A STUNNING COLLECTION OF ONE, TWO, THREE
AND FOUR-BEDROOM HOMES AVAILABLE THROUGH
SHARED OWNERSHIP AND RENT TO BUY**

Hawton Grove is a new standard of living for the area and will act as the foundation for a brand new community. Sustainability, modernity and comfort are key pillars for Hawton Grove, utilising modern open-plan layouts and contemporary fixtures to deliver a truly desirable lifestyle for residents. With plenty of amenities nearby, including local shops, high-street staples and a range of great schools, Hawton Grove is ideally positioned to take advantage.

Get to Know

HAWTON GROVE

Newark, Nottinghamshire

new opportunities for first time buyers, downsizers and growing families.

hawton grove is an exclusive collection of one, two, three and four-bedroom homes offering

SHARED OWNERSHIP



THE ELSEHAM

1 Bedroom Home

PLOTS: 59 & 60



THE KINGFISHER

2 Bedroom Home

PLOTS: 238, 239, 75, 76, 63, 64, 65, 66, 67, 68



THE LAMBERHURST

3 Bedroom Home

PLOTS: 61 & 62



THE LEASIDE

2 Bedroom Home

PLOTS: 77



THE LANSDOWN

3 Bedroom Home

PLOTS: 1, 2, 3, 4, 5, 6, 7, 8, 9 & 10



THE MILFORD

3 Bedroom Home

PLOTS: 78 & 79



THE NEWBURY

3 Bedroom Home

PLOTS: 237



THE PRESTBURY

3 Bedroom Home

PLOTS: 80 & 81

RENT TO BUY



THE ELSEHAM

1 Bedroom Home

PLOTS: 53, 54



THE KINGFISHER

2 Bedroom Home

PLOTS: 11, 12, 13, 55, 56, 57, 58, 69, 70, 71, 84, 85, 86, 240, 241, 242, 243, 244, 245, 246, 247, 248, 249 & 250



THE HENBURY

2 Bedroom Home

PLOTS: 82 & 83



THE LAMBERHURST

3 Bedroom Home

PLOTS: 72 & 73



THE LEASIDE

2 Bedroom Home

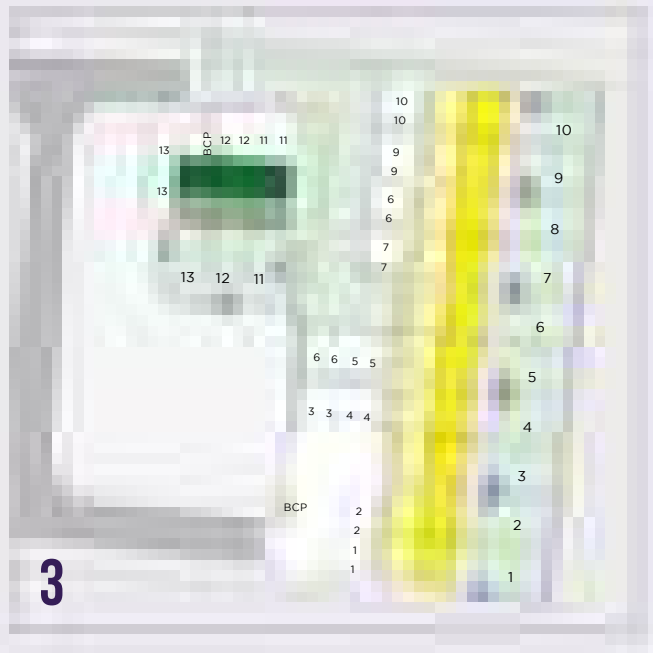
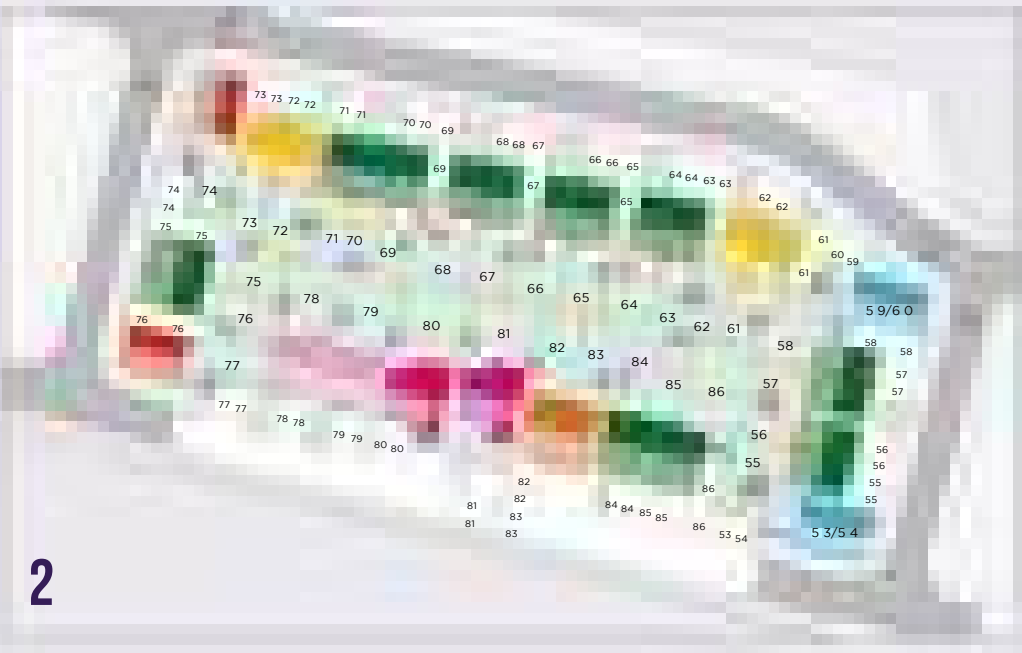
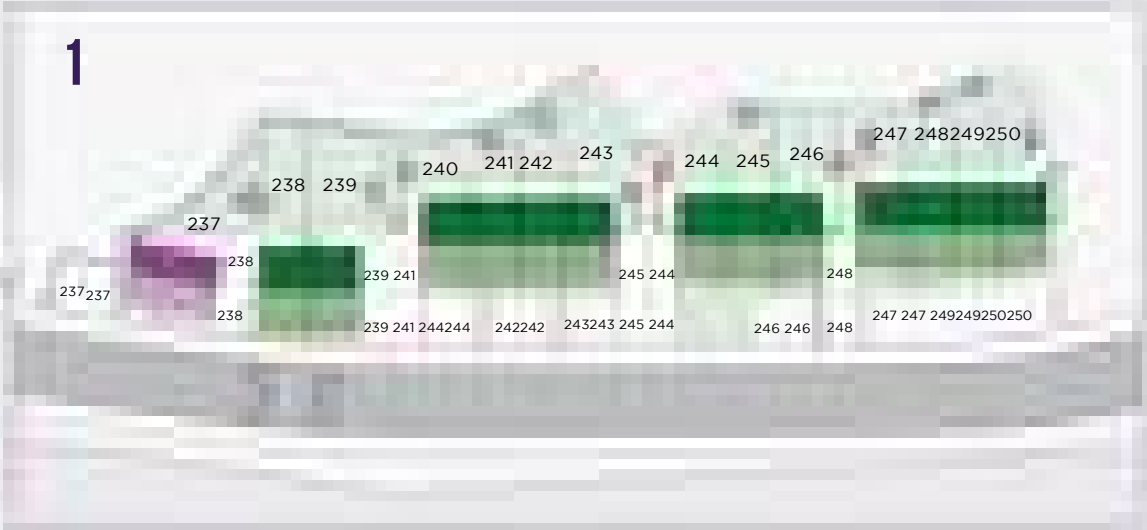
PLOTS: 74



THE NEWBURY

3 Bedroom Home

PLOTS:





The Elseham

this image is taken from an illustrative viewpoint within an open space area. It is intended to convey the general character of the development and should not be relied upon as an exact representation of any individual property, the illustration reflects a typical Platform Home Ownership home of this type; however, specifications may vary between plots. external materials, finishes, landscaping, window positions and the location of garages (where applicable) may differ across the development. Certain properties may also be constructed as handed (mirror image). Further details are available on request. room dimensions have been measured to the widest and longest points and are provided for guidance only. Floorplans are not drawn to scale, while every reasonable effort has been made to ensure accuracy, variations may occur during construction and, in some cases, published measurements or floorplans may contain errors or omissions. Prospective purchasers should not rely solely on these figures and are advised to request full technical drawings and verified measurements from their sales representative before making any decisions.

THE ELSEHAM

DETACHED / SEMI-DETACHED

TOTAL 542 SQ Ft



GROUND FLOOR

SPECIFICATION

Kitchen

- Modern fitted kitchen
- Stainless steel integral oven, hob & extract hood
- Space for washing machine & fridge/freezer
- vinyl flooring to kitchen and wC
- Open plan kitchen/dining/living

Bathroom

- Family bathroom
- Shower over bath
- three piece white suite
- Complimentary wall tiling
- vinyl flooring to bathroom

General

- nearby schools and local amenities
- excellent transport links
- 2 parking spaces per property
- 10 Year build warranty

Kitchen / Dining / Lounge	6.0m x 4.0m	19'8" x 13'2"
Bedroom 1	4.1m x 3.4m	13'7" x 11'3"

The Elseham



this image is taken from an illustrative viewpoint within an open space area. It is intended to convey the general character of the development and should not be relied upon as an exact representation of any individual property, the illustration reflects a typical Platform Home Ownership home of this type; however, specifications may vary between plots. external materials, finishes, landscaping, window positions and the location of garages (where applicable) may differ across the development. Certain properties may also be constructed as handed (mirror image). Further details are available on request. room dimensions have been measured to the widest and longest points and are provided for guidance only. Floorplans are not drawn to scale, while every reasonable effort has been made to ensure accuracy, variations may occur during construction and, in some cases, published measurements or floorplans may contain errors or omissions. Prospective purchasers should not rely solely on these figures and are advised to request full technical drawings and verified measurements from their sales representative before making any decisions.

THE ELSEHAM

DETACHED / SEMI-DETACHED

TOTAL 633 SQ Ft



FIRST FLOOR

SPECIFICATION

Kitchen

- Modern fitted kitchen
- Stainless steel integral oven, hob & extract hood
- Space for washing machine & fridge/freezer
- vinyl flooring to kitchen and wC
- Open plan kitchen/dining/living

Bathroom

- Family bathroom
- Shower over bath
- three piece white suite
- Complimentary wall tiling
- vinyl flooring to bathroom

General

- nearby schools and local amenities
- excellent transport links
- 2 parking spaces per property
- 10 Year build warranty

Kitchen / Dining / Living	6.0m x 4.3m	19'8" x 10'4"
Bedroom 1	6.0m x 3.2m	19'8" x 10'4"

The Kingfisher



this image is taken from an illustrative viewpoint within an open space area. It is intended to convey the general character of the development and should not be relied upon as an exact representation of any individual property, the illustration reflects a typical Platform Home Ownership home of this type; however, specifications may vary between plots. external materials, finishes, landscaping, window positions and the location of garages (where applicable) may differ across the development. Certain properties may also be constructed as handed (mirror image). Further details are available on request. room dimensions have been measured to the widest and longest points and are provided for guidance only. Floorplans are not drawn to scale, while every reasonable effort has been made to ensure accuracy, variations may occur during construction and, in some cases, published measurements or floorplans may contain errors or omissions. Prospective purchasers should not rely solely on these figures and are advised to request full technical drawings and verified measurements from their sales representative before making any decisions.

THE KINGFISHER

SEMI-DETACHED / TERRACED

TOTAL 765 SQ Ft



GROUND



FIRST

SPECIFICATION

Kitchen

- Modern fitted kitchen
- Stainless steel integral oven, hob & extract hood
- Space for washing machine & fridge/freezer
- vinyl flooring to kitchen and wC
- Open plan kitchen/dining

Bathroom

- Family bathroom
- Shower over bath
- three piece white suite
- Complimentary wall tiling
- vinyl flooring to bathroom

General

- nearby schools and local amenities
- excellent transport links
- 2 parking spaces per property
- 10 Year build warranty

Kitchen/Dining	2.4m x 4.7m	7'10" x 15'5"
Living Room	3.2m x 4.5m	10'6" x 14'9"
Bedroom 1	4.5m x 3.2m	14'9" x 10'6"
Bedroom 2	4.5m x 2.6m	14'9" x 8'6"

The Lamberhurst

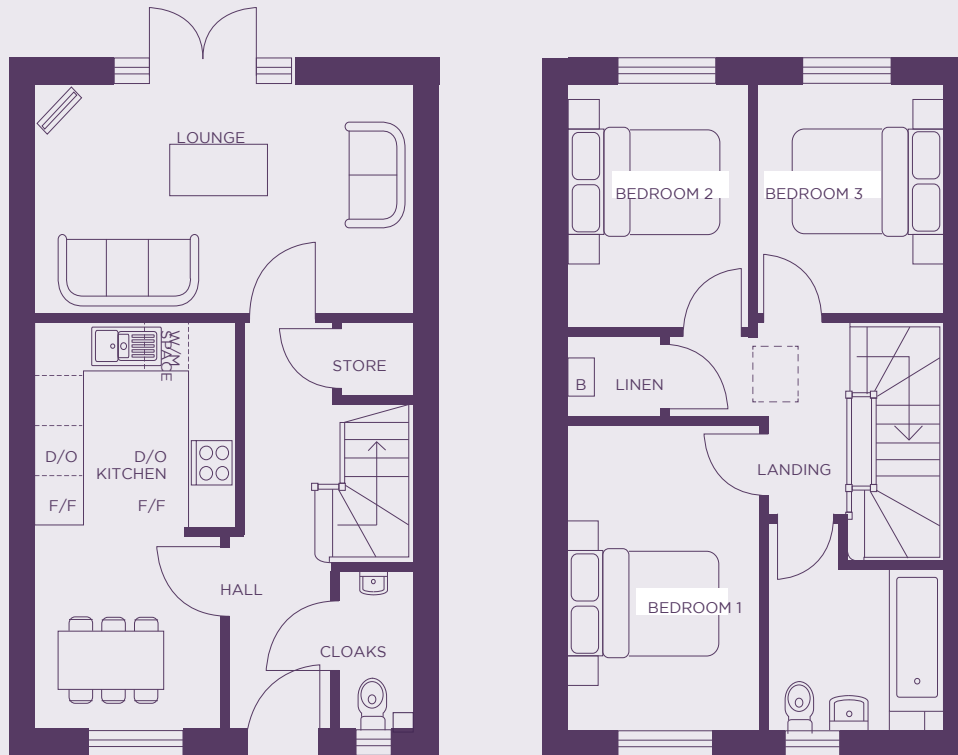


this image is taken from an illustrative viewpoint within an open space area. It is intended to convey the general character of the development and should not be relied upon as an exact representation of any individual property, the illustration reflects a typical Platform Home Ownership home of this type; however, specifications may vary between plots. external materials, finishes, landscaping, window positions and the location of garages (where applicable) may differ across the development. Certain properties may also be constructed as handed (mirror image). Further details are available on request. room dimensions have been measured to the widest and longest points and are provided for guidance only. Floorplans are not drawn to scale, while every reasonable effort has been made to ensure accuracy, variations may occur during construction and, in some cases, published measurements or floorplans may contain errors or omissions. Prospective purchasers should not rely solely on these figures and are advised to request full technical drawings and verified measurements from their sales representative before making any decisions.

THE LAMBERHURST

SEMI-DETACHED

TOTAL 820 SQ Ft



GROUND

FIRST

SPECIFICATION

Kitchen

- Modern fitted kitchen
- Stainless steel integral oven, hob & extract hood
- Space for washing machine & fridge/freezer
- vinyl flooring to kitchen and wC
- Open plan kitchen/dining

Bathroom

- Family bathroom
- Shower over bath
- three piece white suite
- Complimentary wall tiling
- vinyl flooring to bathroom

General

- nearby schools and local amenities
- excellent transport links
- 2 parking spaces per property
- 10 Year build warranty

Kitchen/Dining	2.4m x 5.0m	7'11" x 16'3"
Living Room	4.9m x 2.8m	16'0" x 9'2"
Bedroom 1	2.5m x 3.8m	8'2" x 12'4"
Bedroom 2	2.3m x 3.0m	7'8" x 9'9"
Bedroom 3	2.5m x 2.8m	8'1" x 9'2"



The Leaside

this image is taken from an illustrative viewpoint within an open space area. It is intended to convey the general character of the development and should not be relied upon as an exact representation of any individual property, the illustration reflects a typical Platform Home Ownership home of this type; however, specifications may vary between plots. external materials, finishes, landscaping, window positions and the location of garages (where applicable) may differ across the development. Certain properties may also be constructed as handed (mirror image). Further details are available on request. room dimensions have been measured to the widest and longest points and are provided for guidance only. Floorplans are not drawn to scale, while every reasonable effort has been made to ensure accuracy, variations may occur during construction and, in some cases, published measurements or floorplans may contain errors or omissions. Prospective purchasers should not rely solely on these figures and are advised to request full technical drawings and verified measurements from their sales representative before making any decisions.

THE LEASIDE

DETACHED / SEMI-DETACHED

TOTAL 903 SQ Ft



GROUND

FIRST

SPECIFICATION

Kitchen

- Modern fitted kitchen
- Stainless steel integral oven, hob & extract hood
- Space for washing machine & fridge/freezer
- vinyl flooring to kitchen and wC
- Open plan kitchen/dining

Bathroom

- Family bathroom
- Shower over bath
- three piece white suite
- Complimentary wall tiling
- vinyl flooring to bathroom

General

- nearby schools and local amenities
- excellent transport links
- 2 parking spaces per property
- 10 Year build warranty

Kitchen/Dining	5.3m x 2.6m	17'5" x 8'7"
Living Room	5.3m x 3.1m	17'4" x 10'1"
Bedroom 1	3.8m x 2.7m	12'4" x 8'9"
Bedroom 2	3.0m x 3.1m	10'0" x 10'1"
Bedroom 3	2.2m x 3.1m	7'1" x 10'1"

The Leaside



this image is taken from an illustrative viewpoint within an open space area. It is intended to convey the general character of the development and should not be relied upon as an exact representation of any individual property, the illustration reflects a typical Platform Home Ownership home of this type; however, specifications may vary between plots, external materials, finishes, landscaping, window positions and the location of garages (where applicable) may differ across the development. Certain properties may also be constructed as handed (mirror image). Further details are available on request. room dimensions have been measured to the widest and longest points and are provided for guidance only. Floorplans are not drawn to scale, while every reasonable effort has been made to ensure accuracy, variations may occur during construction and, in some cases, published measurements or floorplans may contain errors or omissions. Prospective purchasers should not rely solely on these figures and are advised to request full technical drawings and verified measurements from their sales representative before making any decisions.

THE LEASIDE

DETACHED / SEMI-DETACHED

TOTAL 903 SQ Ft



GROUND

FIRST

SPECIFICATION

Kitchen

- Modern fitted kitchen
- Stainless steel integral oven, hob & extract hood
- Space for washing machine & fridge/freezer
- vinyl flooring to kitchen and wC
- Open plan kitchen/dining

Bathroom

- Family bathroom
- Shower over bath
- three piece white suite
- Complimentary wall tiling
- vinyl flooring to bathroom

General

- nearby schools and local amenities
- excellent transport links
- 2 parking spaces per property
- 10 Year build warranty

Kitchen/Dining	5.3m x 2.6m	17'5" x 8'7"
Living Room	5.3m x 3.1m	17'4" x 10'1"
Bedroom 1	3.8m x 2.7m	12'4" x 8'9"
Bedroom 2	3.0m x 3.1m	10'0" x 10'1"
Bedroom 3	2.2m x 3.1m	7'1" x 10'1"



The Lansdown

this image is taken from an illustrative viewpoint within an open space area. It is intended to convey the general character of the development and should not be relied upon as an exact representation of any individual property, the illustration reflects a typical Platform Home Ownership home of this type; however, specifications may vary between plots. external materials, finishes, landscaping, window positions and the location of garages (where applicable) may differ across the development. Certain properties may also be constructed as handed (mirror image). Further details are available on request. room dimensions have been measured to the widest and longest points and are provided for guidance only. Floorplans are not drawn to scale, while every reasonable effort has been made to ensure accuracy, variations may occur during construction and, in some cases, published measurements or floorplans may contain errors or omissions. Prospective purchasers should not rely solely on these figures and are advised to request full technical drawings and verified measurements from their sales representative before making any decisions.

THE LANSDOWN

DETACHED / SEMI-DETACHED / TERRACED

TOTAL 937 SQ Ft



GROUND



FIRST

SPECIFICATION

Kitchen

- Modern fitted kitchen
- Stainless steel integral oven, hob & extract hood
- Space for washing machine & fridge/freezer
- vinyl flooring to kitchen and wC
- Open plan kitchen/dining

Bathroom

- Family bathroom
- Shower over bath
- three piece white suite
- Complimentary wall tiling
- vinyl flooring to bathroom

General

- nearby schools and local amenities
- excellent transport links
- 2 parking spaces per property
- 10 Year build warranty

Kitchen/Dining	5.3m x 3.0m	17'4" x 9'10"
Living Room	3.0m x 5.1m	9'9" x 16'9"
Bedroom 1	2.8m x 4.1m	9'0" x 13'4"
Bedroom 2	3.0m x 3.0m	10'0" x 9'11"
Bedroom 3	2.4m x 3.1m	8'0" x 10'1"



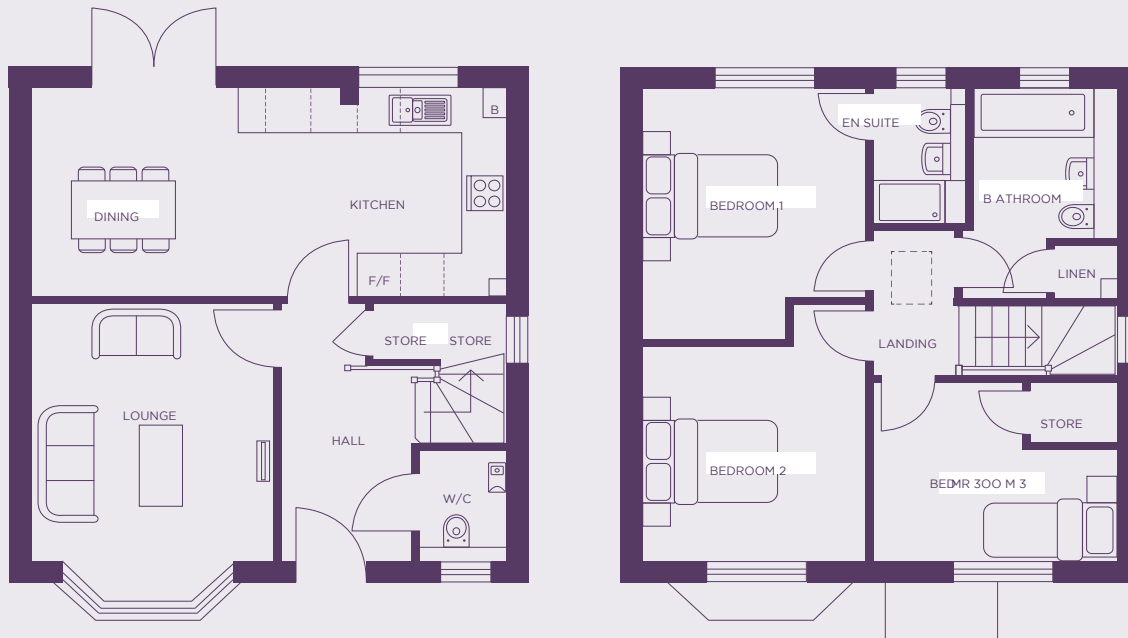
The Milford

this image is taken from an illustrative viewpoint within an open space area. It is intended to convey the general character of the development and should not be relied upon as an exact representation of any individual property, the illustration reflects a typical Platform Home Ownership home of this type; however, specifications may vary between plots. external materials, finishes, landscaping, window positions and the location of garages (where applicable) may differ across the development. Certain properties may also be constructed as handed (mirror image). Further details are available on request. room dimensions have been measured to the widest and longest points and are provided for guidance only. Floorplans are not drawn to scale, while every reasonable effort has been made to ensure accuracy, variations may occur during construction and, in some cases, published measurements or floorplans may contain errors or omissions. Prospective purchasers should not rely solely on these figures and are advised to request full technical drawings and verified measurements from their sales representative before making any decisions.

THE MILFORD

DETACHED

TOTAL 981 SQ Ft



GROUND

FIRST

SPECIFICATION

Kitchen

- Modern fitted kitchen
- Stainless steel integral oven, hob & extract hood
- Space for washing machine & fridge/freezer
- vinyl flooring to kitchen and wC
- Open plan kitchen/dining

Bathroom

- Family bathroom
- Shower over bath
- three piece white suite
- Complimentary wall tiling
- vinyl flooring to bathroom

General

- nearby schools and local amenities
- excellent transport links
- 2 parking spaces per property
- 10 Year build warranty

Kitchen/Dining	6.5m x 3.0m	21'5" x 9'9"
Living Room	3.3m x 4.2m	10'9" x 13'10"
Bedroom 1	2.9m x 3.7m	9'6" x 12'0"
Bedroom 2	2.9m x 3.1m	9'6" x 10'2"
Bedroom 3	3.6m x 2.7m	11'8" x 8'11"

The Newbury



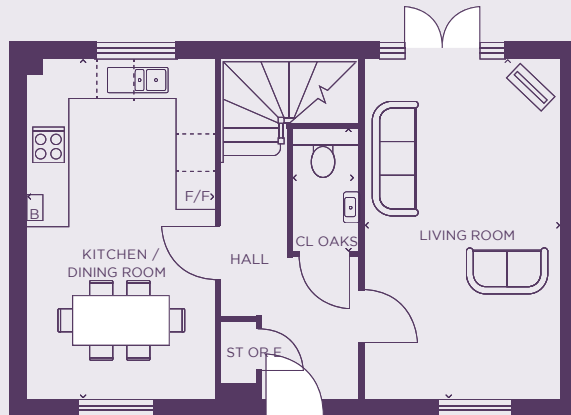
this image is taken from an illustrative viewpoint within an open space area. It is intended to convey the general character of the development and should not be relied upon as an exact representation of any individual property, the illustration reflects a typical Platform Home Ownership home of this type; however, specifications may vary between plots. external materials, finishes, landscaping, window positions and the location of garages (where applicable) may differ across the development. Certain properties may also be constructed as handed (mirror image). Further details are available on request. room dimensions have been measured to the widest and longest points and are provided for guidance only. Floorplans are not drawn to scale, while every reasonable effort has been made to ensure accuracy, variations may occur during construction and, in some cases, published measurements or floorplans may contain errors or omissions. Prospective purchasers should not rely solely on these figures and are advised to request full technical drawings and verified measurements from their sales representative before making any decisions.

THE NEWBURY

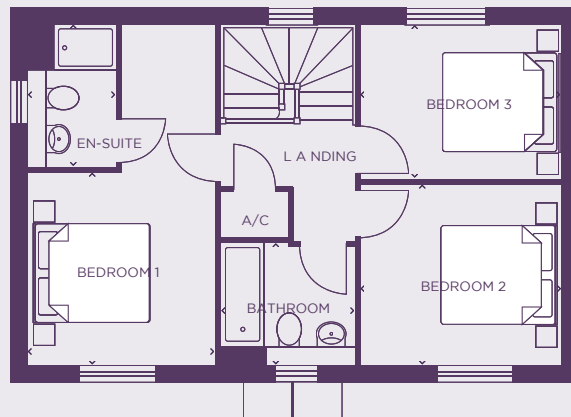
DETACHED / SEMI-DETACHED

TOTAL 1,013 SQ Ft

GROUND



FIRST



SPECIFICATION

Kitchen

- Modern fitted kitchen
- Stainless steel integral oven, hob & extract hood
- Space for washing machine & fridge/freezer
- vinyl flooring to kitchen and wC
- Open plan kitchen/dining

Bathroom

- Family bathroom
- Shower over bath
- three piece white suite
- Complimentary wall tiling
- vinyl flooring to bathroom

General

- nearby schools and local amenities
- excellent transport links
- 2 parking spaces per property
- 10 Year build warranty

Kitchen/Dining	5.4m x 3.0m	17'9" x 9'11"
Living Room	5.4m x 3.3m	17'9" x 10'9"
Bedroom 1	3.9m x 3.0m	12'11" x 9'9"
Bedroom 2	2.8m x 3.3m	9'3" x 10'10"
Bedroom 3	2.5m x 3.3m	8'3" x 10'10"



The Prestbury

this image is taken from an illustrative viewpoint within an open space area. It is intended to convey the general character of the development and should not be relied upon as an exact representation of any individual property. the illustration reflects a typical Platform Home Ownership home of this type; however, specifications may vary between plots. external materials, finishes, landscaping, window positions and the location of garages (where applicable) may differ across the development. Certain properties may also be constructed as handed (mirror image). Further details are available on request. room dimensions have been measured to the widest and longest points and are provided for guidance only. Floorplans are not drawn to scale. while every reasonable effort has been made to ensure accuracy, variations may occur during construction and, in some cases, published measurements or floorplans may contain errors or omissions. Prospective purchasers should not rely solely on these figures and are advised to request full technical drawings and verified measurements from their sales representative before making any decisions.

THE PRESTBURY

DETACHED

TOTAL 1,096 SQ Ft



GROUND

FIRST

SPECIFICATION

Kitchen

- Modern fitted kitchen
- Stainless steel integral oven, hob & extract hood
- Space for washing machine & fridge/freezer
- vinyl flooring to kitchen and wC
- Open plan kitchen/dining

Bathroom

- Family bathroom
- Shower over bath
- three piece white suite
- Complimentary wall tiling
- vinyl flooring to bathroom

General

- nearby schools and local amenities
- excellent transport links
- 2 parking spaces per property
- 10 Year build warranty

Kitchen/Dining	4.9m x 3.0m	15'11" x 9'9"
Living Room	3.2m x 4.2m	10'6" x 13'11"
Bedroom 1	3.9m x 3.0m	12'11" x 9'9"
Bedroom 2	4.1m x 3.8m	13'5" x 12'4"
Bedroom 3	3.5m x 2.2m	11'5" x 7'2"



ABOUT RENT TO BUY

BUY YOUR HAWTON GROVE HOME THROUGH RENT TO BUY

Your dream home may be closer than you think thanks to rent to Buy. rent to Buy (rtB) allows you to rent a new-build home at a reduced rate before allowing you to either buy it through shared ownership or outright sale.

rent to Buy is specifically designed to ease the transition between renting and buying, mainly by subsidising a percentage of the rent.

with rent to Buy, you'll be renting at below-market value for up to five years, meaning you'll be saving money that can be used for a deposit. Once your rtB period ends, you can either purchase the home or leave.

HOW IT WORKS

- 1** RENT THE PROPERTY AT AN 80% SUBSIDISED AMOUNT FOR FIVE YEARS
- 2** SAVE THE REMAINING 20% TOWARDS YOUR DEPOSIT
- 3** AT YEAR 5, PURCHASE THE HOME THROUGH SHARED OWNERSHIP

DID YOU KNOW?

rent to Buy offers great flexibility, and you can purchase more of your home through staircasing whenever you are ready too.



The Elseham

this image is taken from an illustrative viewpoint within an open space area. It is intended to convey the general character of the development and should not be relied upon as an exact representation of any individual property, the illustration reflects a typical Platform Home Ownership home of this type; however, specifications may vary between plots. external materials, finishes, landscaping, window positions and the location of garages (where applicable) may differ across the development. Certain properties may also be constructed as handed (mirror image). Further details are available on request. room dimensions have been measured to the widest and longest points and are provided for guidance only. Floorplans are not drawn to scale, while every reasonable effort has been made to ensure accuracy, variations may occur during construction and, in some cases, published measurements or floorplans may contain errors or omissions. Prospective purchasers should not rely solely on these figures and are advised to request full technical drawings and verified measurements from their sales representative before making any decisions.

THE ELSEHAM

DETACHED / SEMI-DETACHED

TOTAL 542 SQ Ft



GROUND FLOOR

SPECIFICATION

Kitchen

- Modern fitted kitchen
- Stainless steel integral oven, hob & extract hood
- Space for washing machine & fridge/freezer
- vinyl flooring to kitchen and wC
- Open plan kitchen/dining/living

Bathroom

- Family bathroom
- Shower over bath
- three piece white suite
- Complimentary wall tiling
- vinyl flooring to bathroom

General

- nearby schools and local amenities
- excellent transport links
- 2 parking spaces per property
- 10 Year build warranty

Kitchen / Dining / Lounge	6.0m x 4.0m	19'8" x 13'2"
Bedroom 1	4.1m x 3.4m	13'7" x 11'3"

The Elseham



this image is taken from an illustrative viewpoint within an open space area. It is intended to convey the general character of the development and should not be relied upon as an exact representation of any individual property, the illustration reflects a typical Platform Home Ownership home of this type; however, specifications may vary between plots. external materials, finishes, landscaping, window positions and the location of garages (where applicable) may differ across the development. Certain properties may also be constructed as handed (mirror image). Further details are available on request. room dimensions have been measured to the widest and longest points and are provided for guidance only. Floorplans are not drawn to scale, while every reasonable effort has been made to ensure accuracy, variations may occur during construction and, in some cases, published measurements or floorplans may contain errors or omissions. Prospective purchasers should not rely solely on these figures and are advised to request full technical drawings and verified measurements from their sales representative before making any decisions.

THE ELSEHAM

DETACHED / SEMI-DETACHED

TOTAL 633 SQ Ft



FIRST FLOOR

SPECIFICATION

Kitchen

- Modern fitted kitchen
- Stainless steel integral oven, hob & extract hood
- Space for washing machine & fridge/freezer
- vinyl flooring to kitchen and wC
- Open plan kitchen/dining/living

Bathroom

- Family bathroom
- Shower over bath
- three piece white suite
- Complimentary wall tiling
- vinyl flooring to bathroom

General

- nearby schools and local amenities
- excellent transport links
- 2 parking spaces per property
- 10 Year build warranty

Kitchen / Dining / Living	6.0m x 4.3m	19'8" x 10'4"
Bedroom 1	6.0m x 3.2m	19'8" x 10'4"

The Kingfisher



this image is taken from an illustrative viewpoint within an open space area. It is intended to convey the general character of the development and should not be relied upon as an exact representation of any individual property, the illustration reflects a typical Platform Home Ownership home of this type; however, specifications may vary between plots, external materials, finishes, landscaping, window positions and the location of garages (where applicable) may differ across the development. Certain properties may also be constructed as handed (mirror image). Further details are available on request. room dimensions have been measured to the widest and longest points and are provided for guidance only. Floorplans are not drawn to scale, while every reasonable effort has been made to ensure accuracy, variations may occur during construction and, in some cases, published measurements or floorplans may contain errors or omissions. Prospective purchasers should not rely solely on these figures and are advised to request full technical drawings and verified measurements from their sales representative before making any decisions.

THE KINGFISHER

SEMI-DETACHED / TERRACED

TOTAL 765 SQ Ft



GROUND



FIRST

SPECIFICATION

Kitchen

- Modern fitted kitchen
- Stainless steel integral oven, hob & extract hood
- Space for washing machine & fridge/freezer
- vinyl flooring to kitchen and wC
- Open plan kitchen/dining

Bathroom

- Family bathroom
- Shower over bath
- three piece white suite
- Complimentary wall tiling
- vinyl flooring to bathroom

General

- nearby schools and local amenities
- excellent transport links
- 2 parking spaces per property
- 10 Year build warranty

Kitchen/Dining	2.4m x 4.7m	7'10" x 15'5"
Living Room	3.2m x 4.5m	10'6" x 14'9"
Bedroom 1	4.5m x 3.2m	14'9" x 10'6"
Bedroom 2	4.5m x 2.6m	14'9" x 8'6"

The Henbury



this image is taken from an illustrative viewpoint within an open space area. It is intended to convey the general character of the development and should not be relied upon as an exact representation of any individual property, the illustration reflects a typical Platform Home Ownership home of this type; however, specifications may vary between plots. external materials, finishes, landscaping, window positions and the location of garages (where applicable) may differ across the development. Certain properties may also be constructed as handed (mirror image). Further details are available on request. room dimensions have been measured to the widest and longest points and are provided for guidance only. Floorplans are not drawn to scale, while every reasonable effort has been made to ensure accuracy, variations may occur during construction and, in some cases, published measurements or floorplans may contain errors or omissions. Prospective purchasers should not rely solely on these figures and are advised to request full technical drawings and verified measurements from their sales representative before making any decisions.

THE HENBURY

SEMI-DETACHED / TERRACED

TOTAL 765 SQ Ft



GROUND

FIRST

SPECIFICATION

Kitchen

- Modern fitted kitchen
- Stainless steel integral oven, hob & extract hood
- Space for washing machine & fridge/freezer
- vinyl flooring to kitchen and wC
- Open plan kitchen/dining

Bathroom

- Family bathroom
- Shower over bath
- three piece white suite
- Complimentary wall tiling
- vinyl flooring to bathroom

General

- nearby schools and local amenities
- excellent transport links
- 2 parking spaces per property
- 10 Year build warranty

Kitchen/Dining	3.5m x 3.6m	11'5" x 11'10"
Living Room	3.6m x 4.2m	11'10" x 13'8"
Bedroom 1	4.7m x 2.9m	15'4" x 9'8"
Bedroom 2	2.4m x 3.2m	7'11" x 10'7"
Bathroom	2.1m x 2.0m	7'0" x 6'6"

The : Lamberhurst

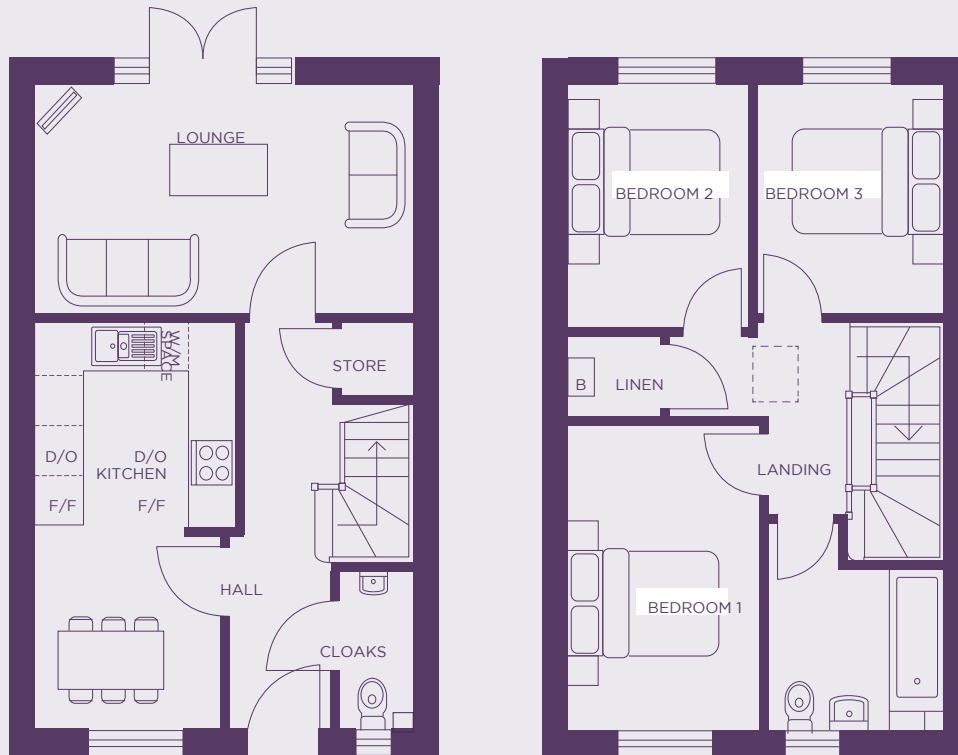


this image is taken from an illustrative viewpoint within an open space area. It is intended to convey the general character of the development and should not be relied upon as an exact representation of any individual property, the illustration reflects a typical Platform Home Ownership home of this type; however, specifications may vary between plots. external materials, finishes, landscaping, window positions and the location of garages (where applicable) may differ across the development. Certain properties may also be constructed as handed (mirror image). Further details are available on request. room dimensions have been measured to the widest and longest points and are provided for guidance only. Floorplans are not drawn to scale, while every reasonable effort has been made to ensure accuracy, variations may occur during construction and, in some cases, published measurements or floorplans may contain errors or omissions. Prospective purchasers should not rely solely on these figures and are advised to request full technical drawings and verified measurements from their sales representative before making any decisions.

THE LAMBERHURST

SEMI-DETACHED

TOTAL 820 SQ Ft



GROUND

FIRST

SPECIFICATION

Kitchen

- Modern fitted kitchen
- Stainless steel integral oven, hob & extract hood
- Space for washing machine & fridge/freezer
- vinyl flooring to kitchen and wC
- Open plan kitchen/dining

Bathroom

- Family bathroom
- Shower over bath
- three piece white suite
- Complimentary wall tiling
- vinyl flooring to bathroom

General

- nearby schools and local amenities
- excellent transport links
- 2 parking spaces per property
- 10 Year build warranty

Kitchen/Dining	2.4m x 5.0m	7'11" x 16'3"
Living Room	4.9m x 2.8m	16'0" x 9'2"
Bedroom 1	2.5m x 3.8m	8'2" x 12'4"
Bedroom 2	2.3m x 3.0m	7'8" x 9'9"
Bedroom 3	2.5m x 2.8m	8'1" x 9'2"



The Leaside

this image is taken from an illustrative viewpoint within an open space area. It is intended to convey the general character of the development and should not be relied upon as an exact representation of any individual property, the illustration reflects a typical Platform Home Ownership home of this type; however, specifications may vary between plots. external materials, finishes, landscaping, window positions and the location of garages (where applicable) may differ across the development. Certain properties may also be constructed as handed (mirror image). Further details are available on request. room dimensions have been measured to the widest and longest points and are provided for guidance only. Floorplans are not drawn to scale, while every reasonable effort has been made to ensure accuracy, variations may occur during construction and, in some cases, published measurements or floorplans may contain errors or omissions. Prospective purchasers should not rely solely on these figures and are advised to request full technical drawings and verified measurements from their sales representative before making any decisions.

THE LEASIDE

DETACHED / SEMI-DETACHED

TOTAL 903 SQ Ft



GROUND

FIRST

SPECIFICATION

Kitchen

- Modern fitted kitchen
- Stainless steel integral oven, hob & extract hood
- Space for washing machine & fridge/freezer
- vinyl flooring to kitchen and wC
- Open plan kitchen/dining

Bathroom

- Family bathroom
- Shower over bath
- three piece white suite
- Complimentary wall tiling
- vinyl flooring to bathroom

General

- nearby schools and local amenities
- excellent transport links
- 2 parking spaces per property
- 10 Year build warranty

Kitchen/Dining	5.3m x 2.6m	17'5" x 8'7"
Living Room	5.3m x 3.1m	17'4" x 10'1"
Bedroom 1	3.8m x 2.7m	12'4" x 8'9"
Bedroom 2	3.0m x 3.1m	10'0" x 10'1"
Bedroom 3	2.2m x 3.1m	7'1" x 10'1"

Hawton Grove

newark, nottinghamshire

HOUSE PRICES FOR ALL PLOTS AVAILABLE

PLOT	TYPE	ADDRESS	HANDOVER	100% SHARE	40% SHARE VALUE	MONTHLY RENT
237	Newbury - 3 Bed Detached	SOLD SUBJECT TO CONTRACT	July 2026	£315,000	£126,000	£433.13
238	Kingfisher - 2 Bed Semi-Detached	36 Holly Blue Lane, Balderton, Newark on Trent, NG24 0AQ	July 2026	£230,000	£92,000	£316.25
239	Kingfisher - 2 Bed Semi-Detached	SOLD SUBJECT TO CONTRACT	July 2026	£230,000	£92,000	£316.25
75	Kingfisher - 2 Bed Semi-Detached	2 Grayling Croft, Balderton Newark on Trent, NG24 0AF	August 2026	£230,000	£92,000	£316.25
76	Kingfisher - 2 Bed Semi-Detached	3 Grayling Croft, Balderton Newark on Trent, NG24 0AF	August 2026	£230,000	£92,000	£316.25
77	Leaside - 3 Bed Detached	4 Grayling Croft, Balderton Newark on Trent, NG24 0AF	August 2026	£295,000	£118,000	£405.63
78	Milford - 3 Bed Detached	5 Grayling Croft, Balderton Newark on Trent, NG24 0AF	August 2026	£305,000	£122,000	£419.38
79	Milford - 3 Bed Detached	6 Grayling Croft, Balderton Newark on Trent, NG24 0AF	August 2026	£305,000	£122,000	£419.38
80	Prestbury - 3 Bed Detached	7 Grayling Croft, Balderton Newark on Trent, NG24 0AF	August 2026	£325,000	£130,000	£446.88
81	Prestbury - 3 Bed Detached	8 Grayling Croft, Balderton Newark on Trent, NG24 0AF	August 2026	£325,000	£130,000	£446.88



Hawton Ln, new
Balderton, Newark,
NG24 3BU

Get In Touch

0333 200 7304
sales@platformhg.com

SatNav

NG24 3BU

F PLAtForMHOMeOwnerSHIP

d @PLAtForMHOMeOwnerSHIP

 @PLAtForMnewHOMe

Platform Home Ownership have taken every effort to ensure that these documents are accurate and represent the properties available. Platform Home Ownership and the developer may in their efforts to improve design reserve the right to alter site plans, floorplans, elevations and specifications without prior notice. Maps shown are not to scaled and for illustrative purposes only. Distances are taken from [google.co.uk/maps](https://www.google.co.uk/maps). Information is correct at the time it was published -april 2026. For more information please visit us website at www.platformhomeownership.com